

INSTRUMENT APPROACH
CHART
ICAO

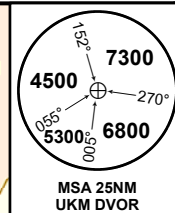
ILS
LLZ 111.7
IUS
GP 333.5
CH 54X

AERODROME ELEV **942ft**
HEIGHTS RELATED TO
THR RWY12 - ELEV **934ft**

UST-KAMENOGORSK TOWER 130.1
UST-KAMENOGORSK ATIS (EN) 124.2
UST-KAMENOGORSK ATIS (RU) 127.7

UST-KAMENOGORSK
ILS/DME
RWY 12

DIST IN NM
ALT, ELEV IN FT
BRG ARE MAGNETIC
VAR 6°E



SURVEILLANCE RADAR REQUIRED

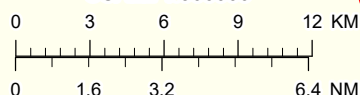
UKM 10 NM

Alt SET: hPa (mm on req),
QNH (QFE on req)

ALT/HEIGHT CONVERSION	
QNH	(QFE)
6000	(5066FT - 1544 m)
4000	(3066FT - 935 m)
3000	(2066FT - 630 m)
2300	(1366FT - 416 m)

UST-KAMENOGORSK
DVOR/DME 115
UKM
50°01'58"N
082°30'31"E

SCALE 1:300000



IF
RONRO
D10.9 IUS
D12.2 UKM
4000

FAP
D 6.2 IUS
D7.5 UKM
3000

TRANSITION ALT
10000

MISSED APPROACH
Climb on track 124° to 4000 ft.
After passing 2300 ft radar
vectoring will be provided.

DVOR/DME
UKM

ILS RDH 56
ELEV 934
(THR RWY 12)

Aircraft Category		A	B	C	D	DIST to THR DME IUS	NM	6.2	5	4	3	2	1
Straight-in Approach OCA/H						DME UKM	NM	7.5	6.3	5.3	4.3	3.3	2.3
	ILS CAT I	1148(214)	1158(224)	1168(234)	1178(244)	ALTITUDE	FT	3000	2602	2275	1951	1628	1307
						HEIGHT	FT	(2066)	(1668)	(1341)	(1017)	(694)	(373)

DME IUS ZERO RANGED TO THR RWY 12

Aerodrome Operating Minima DH ft x RVR (CMV)	ILS CAT I					WARNING							
						1.Priority landing is performed according to pattern.							
						2.Heavy turbulence and wind shear may arise on final.							
						GS	Kt	80	100	120	140	160	180
						Desc.Rate(5.2%)	ft/min	420	530	640	740	850	960

UST-KAMENOGORSK
ILS/DME
AERONAUTICAL DATA TABULATION

ILS approach to RWY12 from BEDIT, RONRO, DIRIN	
Fix/point	Coordinates
UKM DVOR/DME	50° 01' 58.0"N 082° 30' 31.1"E
(FAP) D6.2 IUS, D7.5 UKM	50° 06' 40.1"N 082° 21' 29.4"E
RONRO (IF) D10.9 IUS, D12.2 UKM	50° 09' 43.7"N 082° 15' 54.5"E
BEDIT (IAF) R279°, D13.4 UKM	50° 05' 36.7"N 082° 10' 28.9"E
DIRIN (IAF) R327°, D13.3 UKM	50° 13' 51.6"N 082° 21' 18.9"E
THR RWY 12	50° 02' 38.22"N 082° 28' 49.30"E
IUS LOC	50° 01' 22.8"N 082° 31' 05.8"E